

# Epidemiologic Profile of MSM Connecticut, 2010

Aaron Roome, MPH, PhD

HIV/AIDS Surveillance Program  
[www.ct.gov/dph/HIVsurveillance](http://www.ct.gov/dph/HIVsurveillance)  
(860) 509-7900  
[aaron.roome@ct.gov](mailto:aaron.roome@ct.gov)



# Summary of HIV/AIDS in Connecticut

## Overview

- HIV/AIDS surveillance conducted since early 80s.
- Total cases reported: **19,473**
- People living with HIV/AIDS: **10,574 (54%)**
  - Source of infection\*:

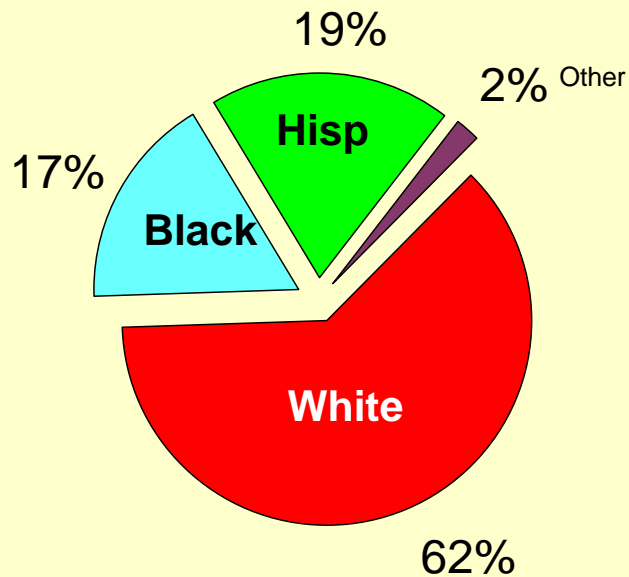
✓ IDU	4,588	43.4%
✓ Heterosexual	2,828	26.7%
✓ <b>MSM</b>	<b>2,720</b>	<b>25.7% (+2% MSM/IDU)</b>

\*Multiple Imputation used to statistically adjust for cases reported with no risk.

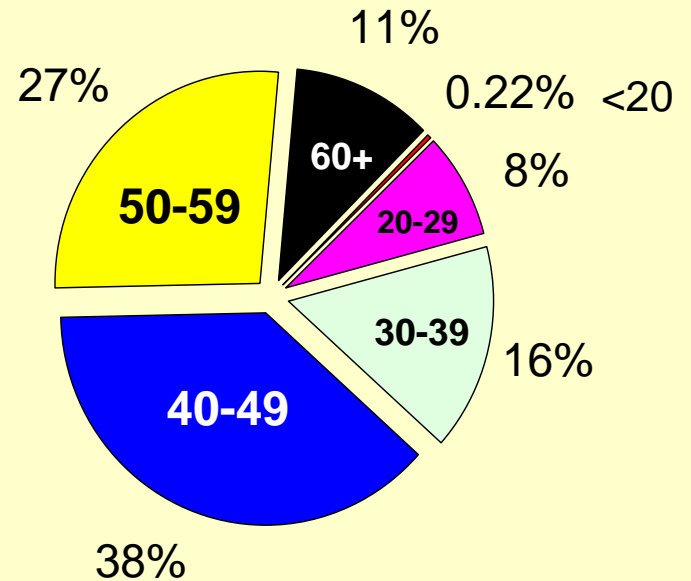
# Prevalent MSM HIV/AIDS cases by race/ethnicity and age group, Connecticut, 2009

(2,269 reported with risk group -- 2,718 adjusted for unknown)

### Race/ethnicity

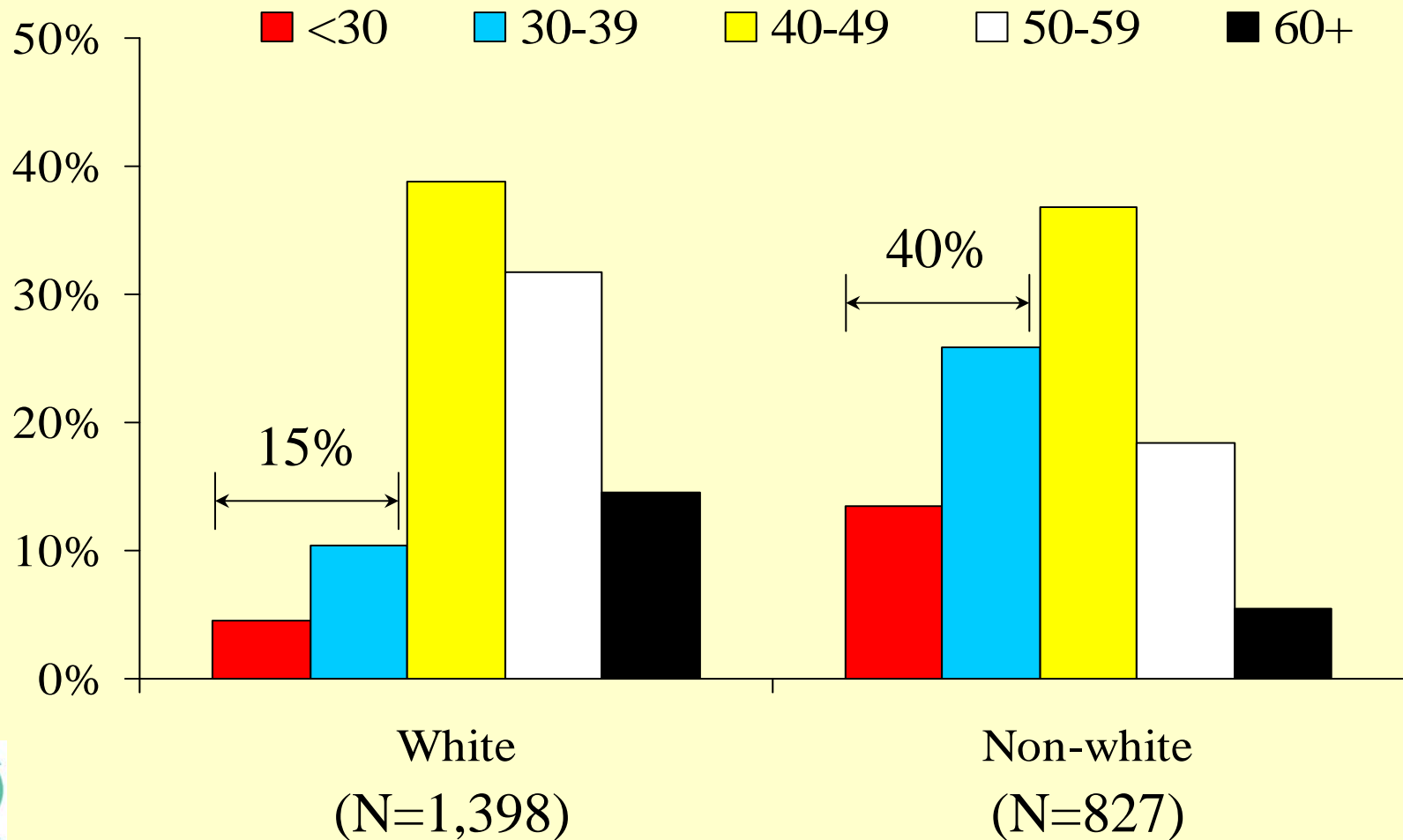


### Age group (current age)



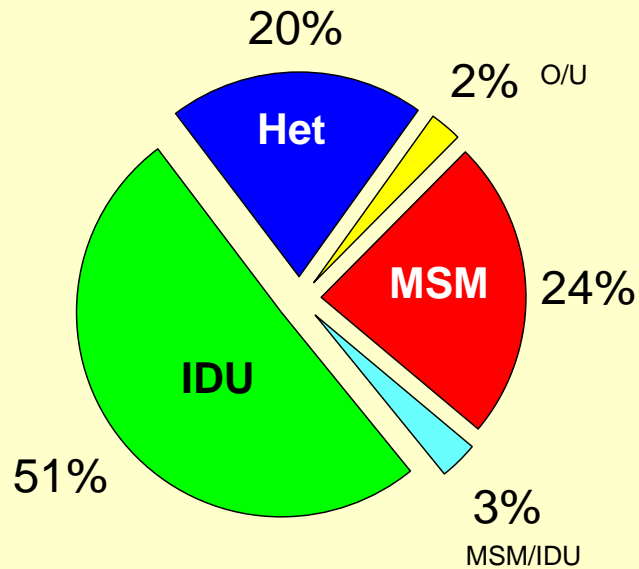
# Age distribution of prevalent MSM HIV/AIDS cases by white and non-white race/ethnicity, Connecticut, 2009

(cases reported with MSM risk)  
(current age)



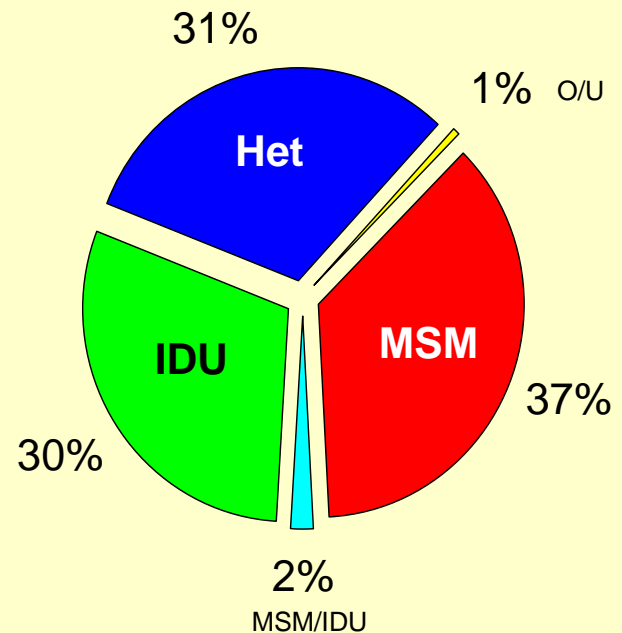
# HIV/AIDS cases by risk\* group, Connecticut, 2009

Diagnosed  
1981-2004



N=17,336

Recently diagnosed  
2005-2009

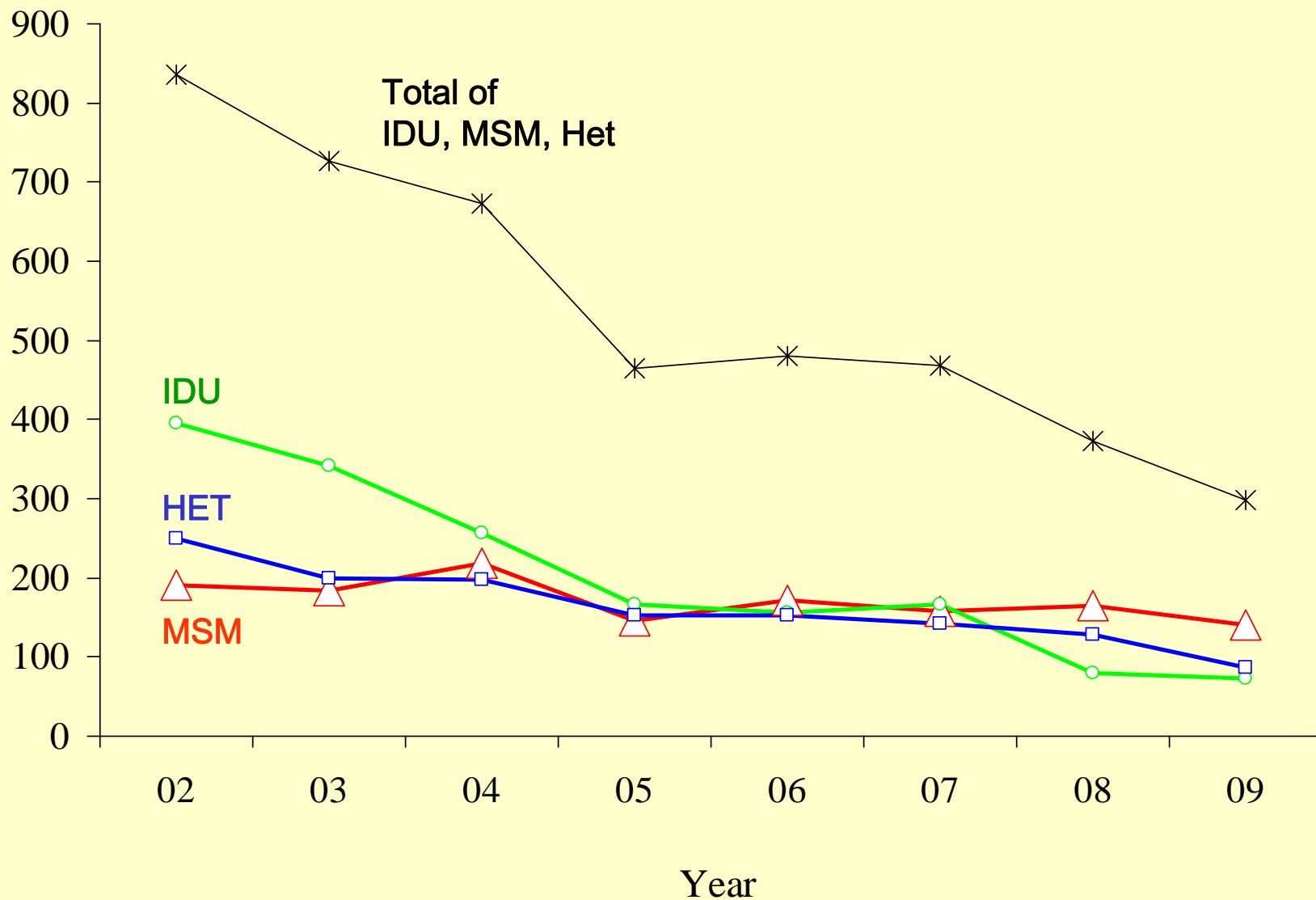


N=2,137

\*Unknown risk adjusted using multiple imputation

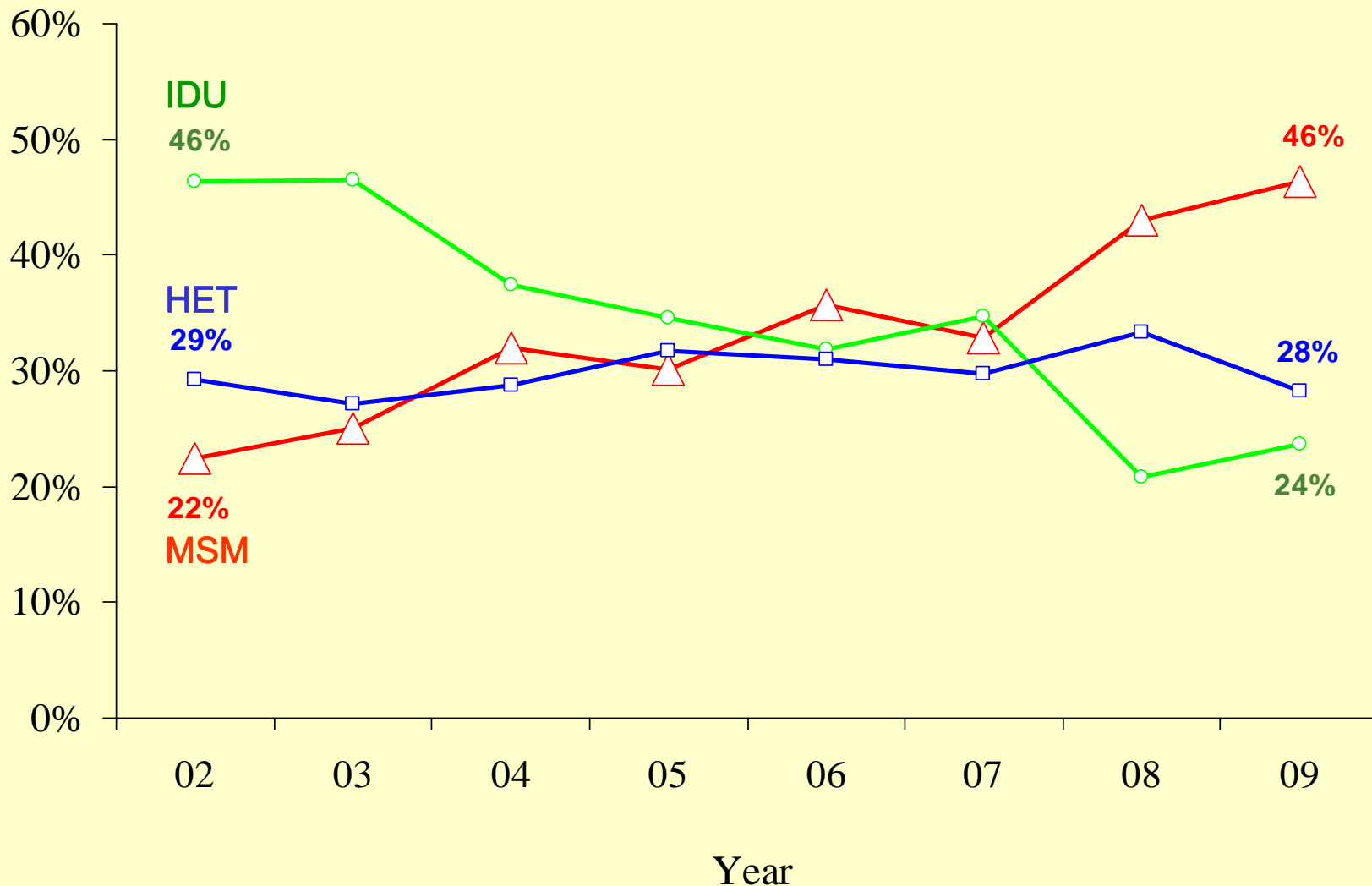
# HIV/AIDS cases by adjusted risk group and year of diagnosis, Connecticut, 2002-2009

(Risk group adjusted for cases reported with unknown risk using **MULTIPLE IMPUTATION**)



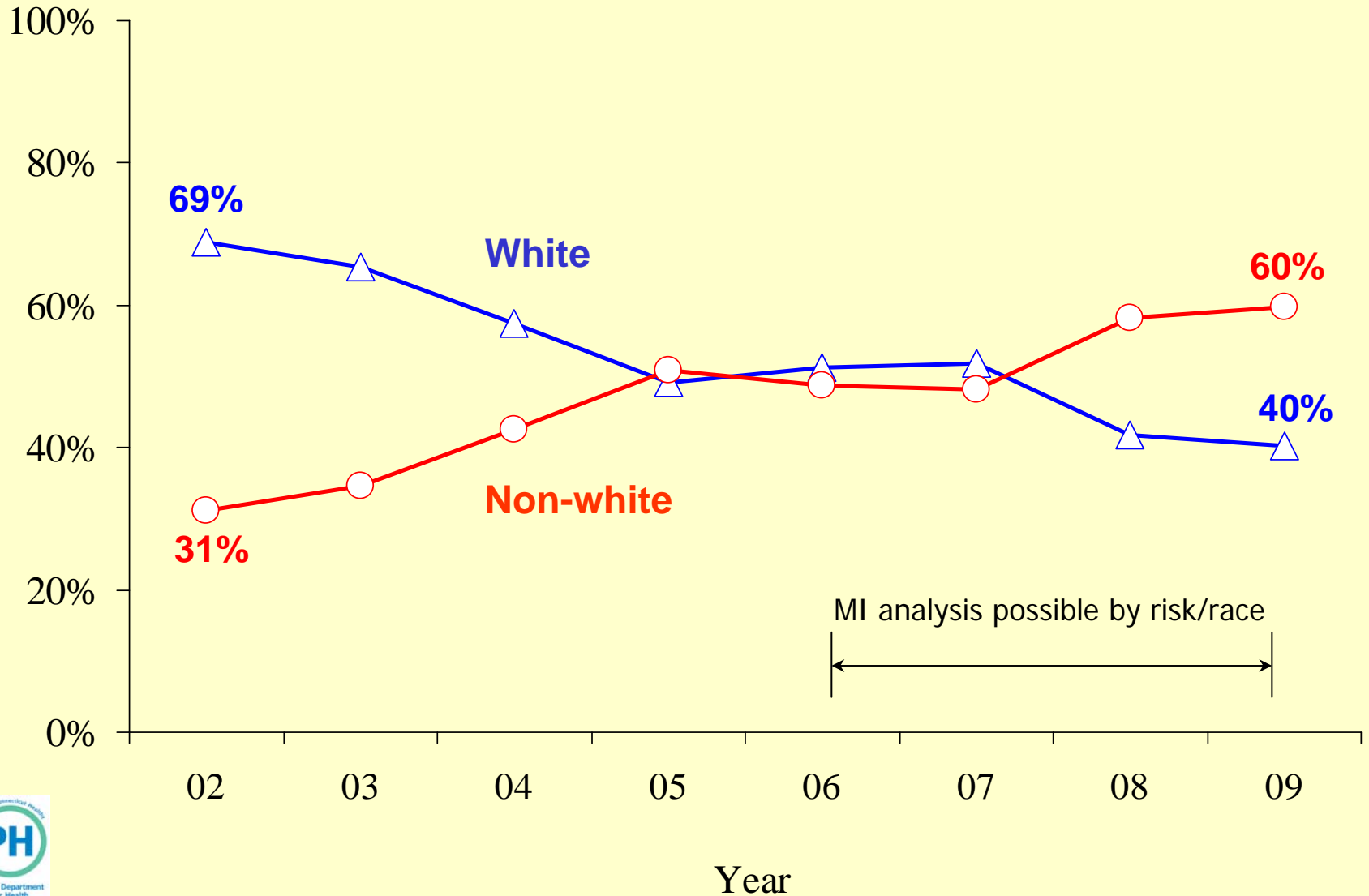
# HIV/AIDS cases by adjusted risk group and year of diagnosis, Connecticut, 2002-2009

(Risk group adjusted for cases reported with unknown risk using **MULTIPLE IMPUTATION**)



# Trend in white and non-white **MSM** HIV/AIDS cases by year of diagnosis, Connecticut, 2002-2009

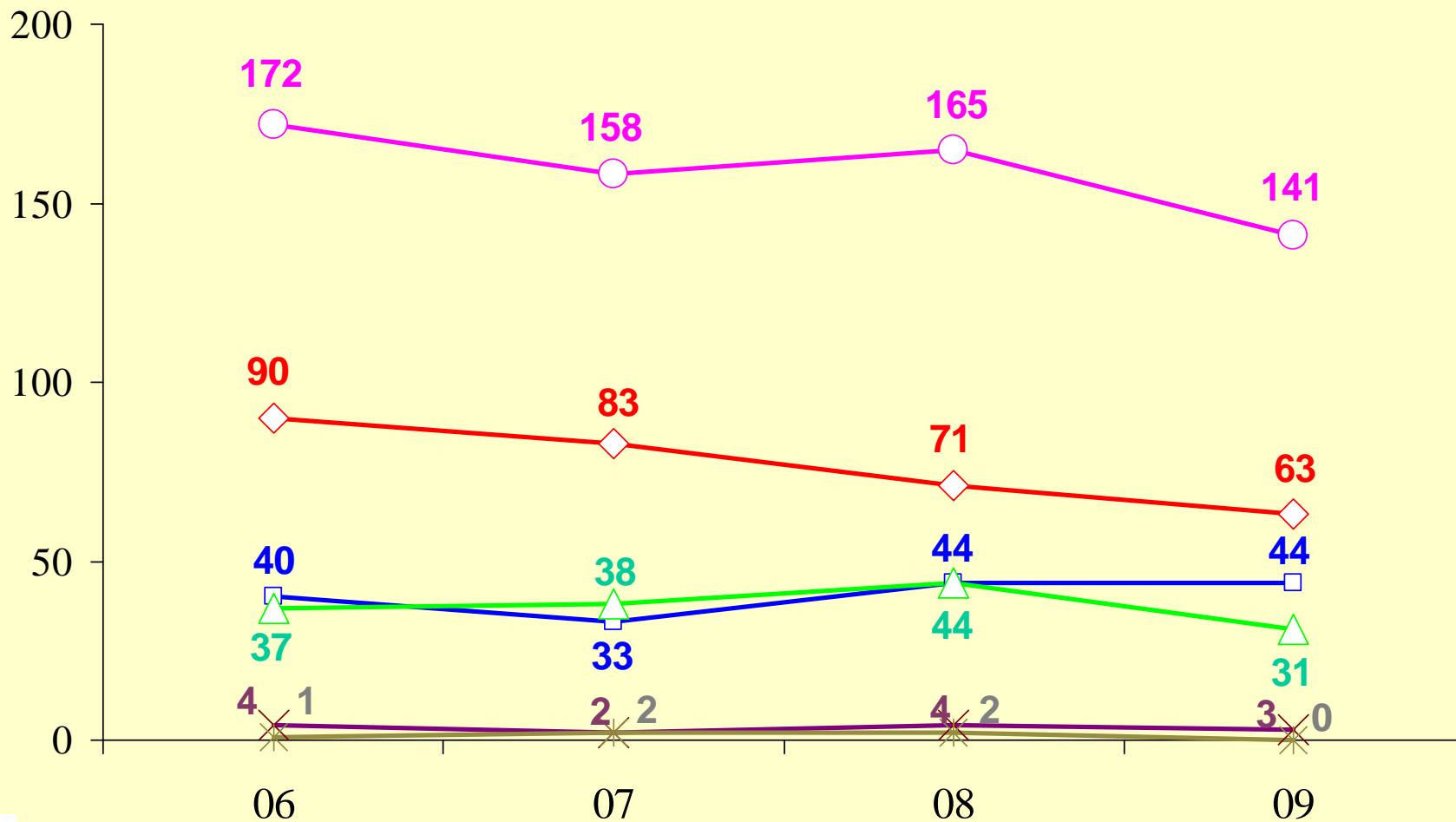
(Cases with risk reported as of Dec 2009)





# MSM HIV/AIDS cases by adjusted risk group and year of diagnosis, Connecticut, 2002-2009

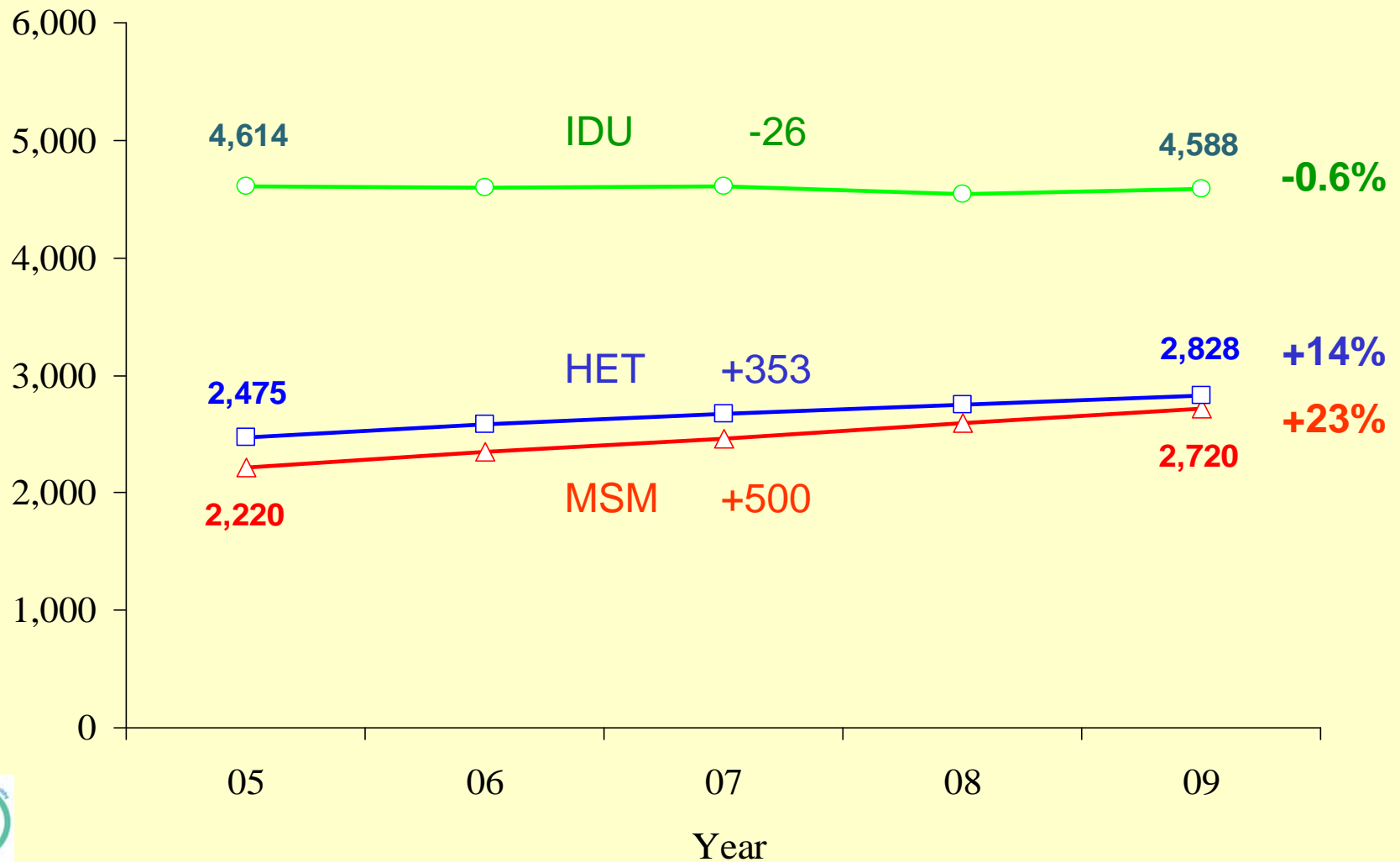
(Risk group adjusted for cases reported with unknown risk using **MULTIPLE IMPUTATION**)



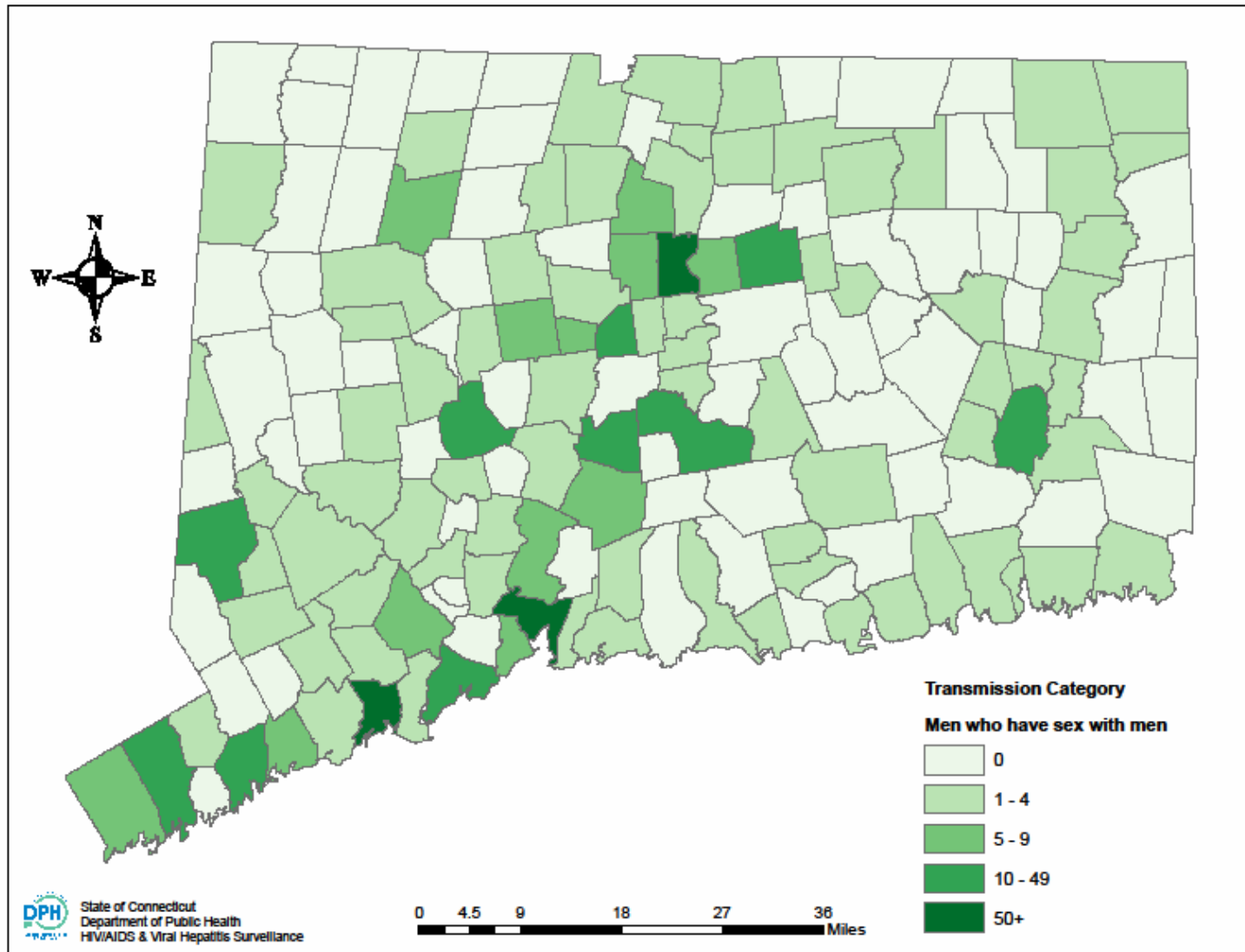
◆ White   
 □ Black   
 △ Hispanic   
 × Asian   
 ✱ Multiple   
 ○ Total

# PLWHA by adjusted risk group and year, Connecticut, 2005-2009

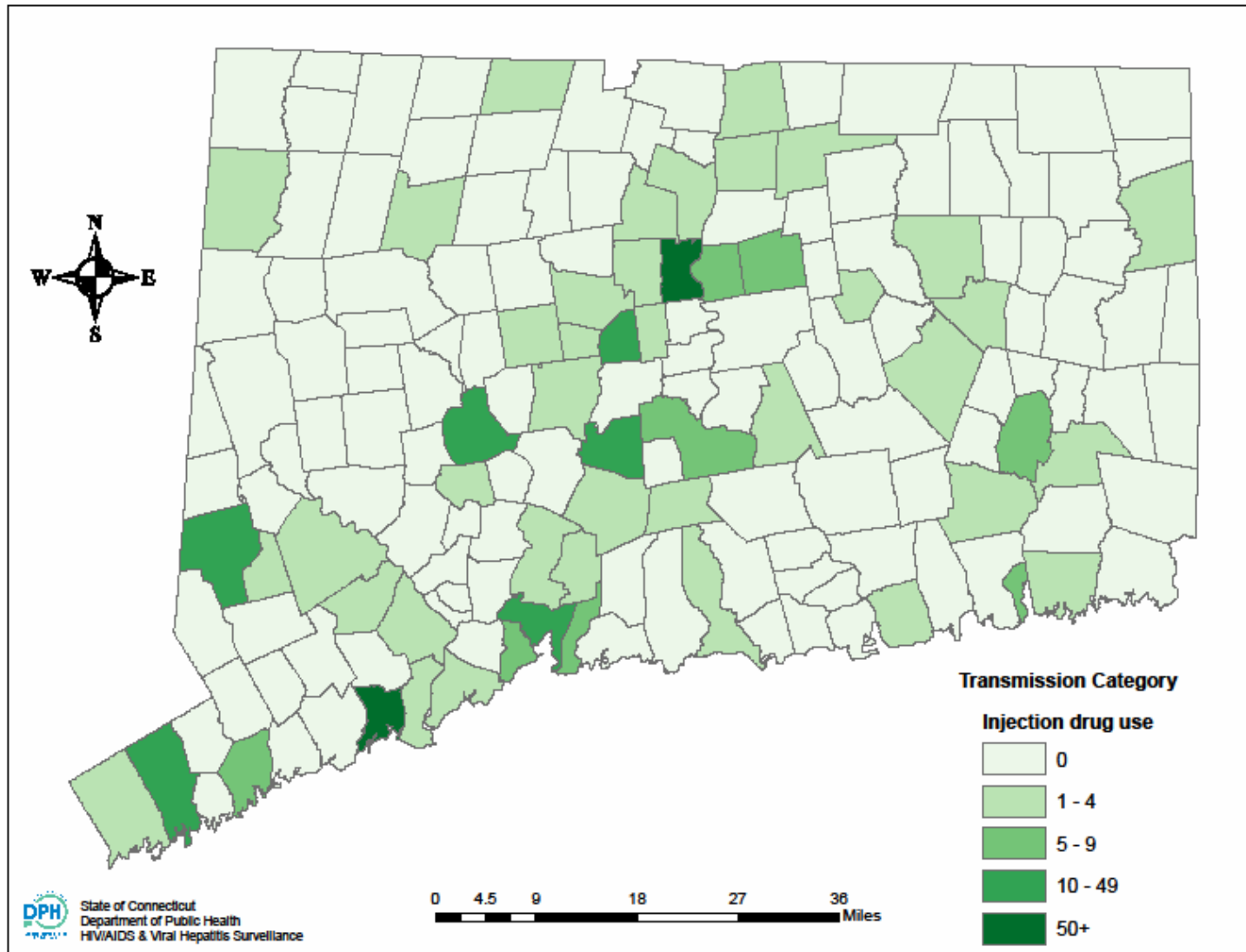
(Risk group adjusted for cases reported with unknown risk using **MULTIPLE IMPUTATION**)



# MSM HIV/AIDS cases by town of residence, Connecticut, diagnosed 2002-2009

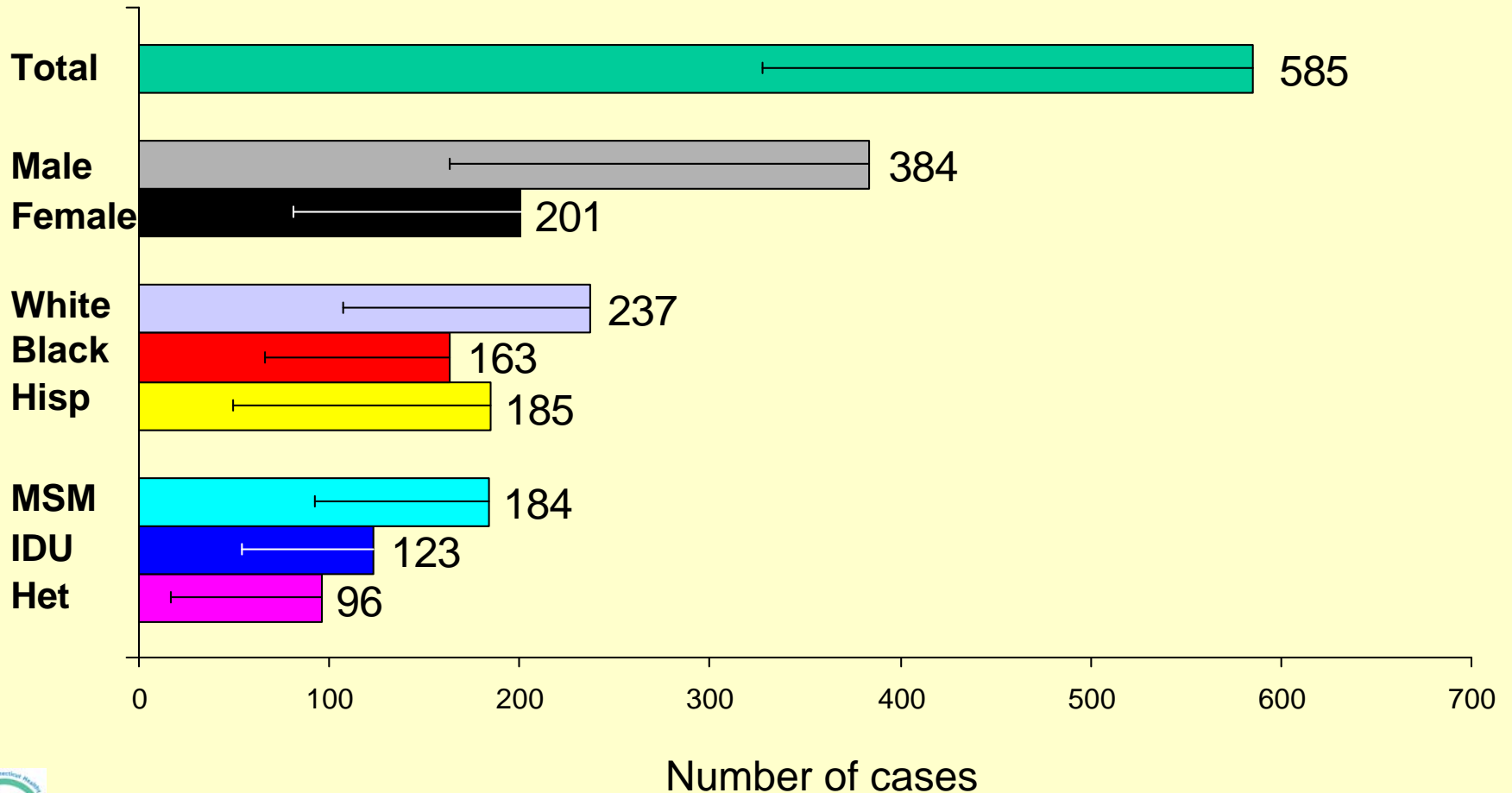


# IDU HIV/AIDS cases by town of residence, Connecticut, diagnosed 2002-2009



# HIV incidence estimates, Connecticut, 2006

(Number of cases)



# Prevalence of HIV in men who have sex with men

- In 2010, CDC released an estimate that 4% (95% CI; 2.8%-5.3%) of the male population (13+) are MSM (past 5 years).
- Connecticut HIV-positive MSM: **2,720**
- Connecticut MSM population: **55,000**
- An estimated ...

**5% of MSM in Connecticut are HIV positive**

**or**

**50 per 1,000**

**5,000 per 100,000**

- Higher-risk groups within MSM would be expected to have much higher rates of infection.

# Conclusions

- Data from a variety of surveillance activities point to continued transmission of HIV in MSM (CT and national HIV/AIDS surveillance, HIV incidence, STD surveillance, matches of HIV and STD registries).
- While the number of HIV/AIDS cases in IDU has decreased, the number of newly diagnosed MSM cases has been level over the past several years.
- The number of PLWHA who are MSM has increased.
- The percentage of non-white MSM HIV/AIDS cases has increased. Non-white MSM cases tend to be younger.
- MSM cases are distributed broadly across the state in both rural and urban areas in significant numbers.
- New estimates of MSM prevalence yield HIV rates in MSM for the first time. HIV risk in MSM is comparable to other high-risk groups in Connecticut.