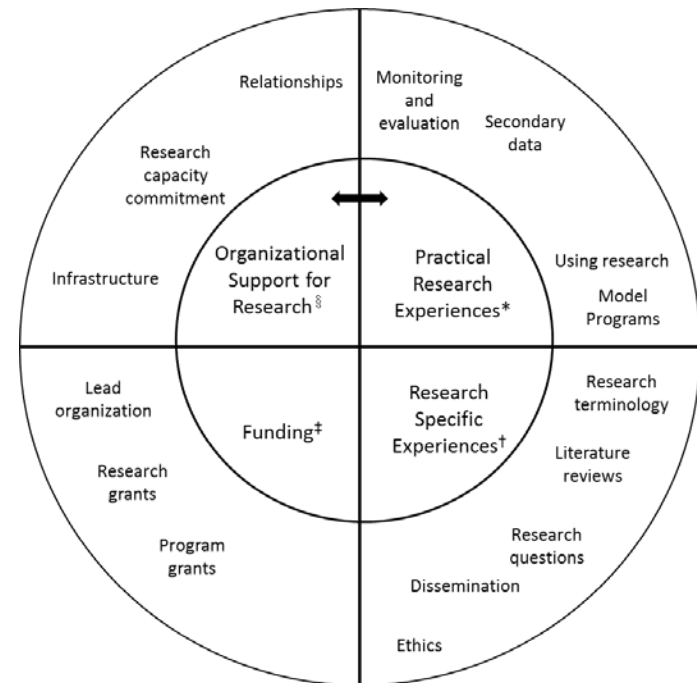


Refining and Validating the Community Research Activity Assessment Tool (CREAT)

Debbie Humphries, PhD, MPH

June 2, 2016

Yale SCHOOL OF PUBLIC HEALTH





* Domain includes the following subdomains: Monitoring and evaluation; Identifying, using, and sharing secondary data; Conducting community assessments; Using research in practice; Finding/adapting evidence-based practices

† Domain includes the following subdomains: Knowledge and use of basic research terminology; Conducting literature reviews; Asking research questions and using research questions to collect primary data; Disseminating research results and advocacy; Conducting ethical research

‡ Domain includes the following subdomains: Being a “lead” organization on a grant; Writing/receiving grants for research; Writing/receiving grants for programs and services; Negotiating budgets

§ Domain includes the following subdomains: Infrastructure (space, time, staff, technology); Commitment to research capacity (interests, motivations, attitudes); Relationships with external researchers

Purpose

- To strengthen the capacity for high quality community engaged research (CEnR) by developing a valid tool to assess research capacity of community based organizations (CBO).
 - Developed and piloted the tool under the auspices of CIRA 2011-2013
 - Yale Center for Translational Science Award small grant to refine and strengthen content validity using a Delphi panel (2015-2017)

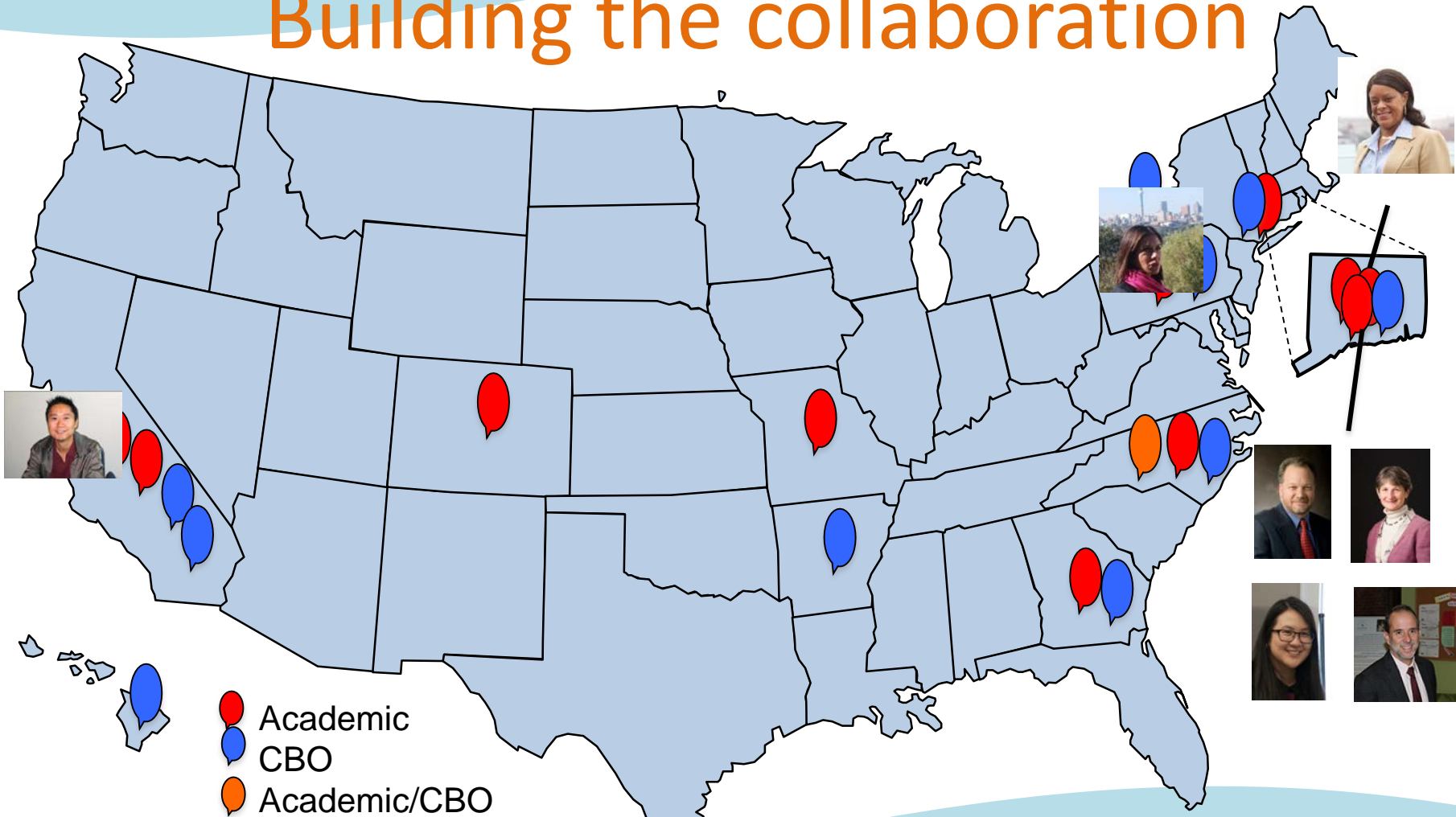
Methods

- Delphi Process:
 - Rounds of voting are held until group consensus is reached.
 - Strengths: The Delphi method preserves anonymity, collects input from diverse individuals, and avoids the dominant influence of a small number of individuals.
 - *The Delphi method has been used extensively in health care and research to create consensus criteria for a variety of domains of health care research and quality.*

Progress to Date

Phase	Key Achievements
Phase 1 Pilot	Developed framework and piloted tool (2011-2013) (Humphries et al. (2014) Prog Community Health Partnersh. 8(4):421-32.
Phase 2 Funding	Building relationships with academic and community partners (2013-2014) Completed 2 of 5 rounds Panelists have proposed new subdomains and changed definitions Ex: Research ethics-Protecting the confidentiality and rights of your
Phase 3 Refine & Validate	community members or clients while using their information for research purposes. Changed to: Conducting research that protects the confidentiality and rights of participants and is respectful of participants and their communities' cultural beliefs and practices Panelists are currently reviewing round 3

Building the collaboration



Yale SCHOOL OF PUBLIC HEALTH

Lessons for the Network

- Be creative regarding funding sources (e.g. CTSA)
- Tap into national entities doing similar work (e.g. CCPH)
- Be strategic in building relationships with partners
- Build collaborations on the strengths of community and academic partners
- Focus on academic/community collaborations that are mutually beneficial
- Identify and address capacity building needs of both academic and community partners

Next Steps & Plans for Growth

- Field test the CREAT tool in the NEHIV IS network and nationally
- Validate tool through electronic dissemination nationally via CCPH and other partnerships